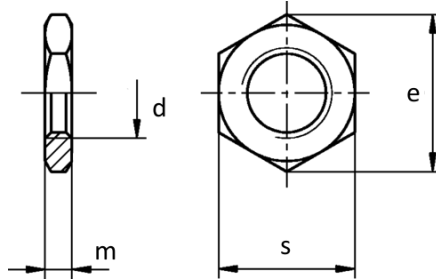


# DIN EN ISO 8675

Benzeri - Similar - Ähnlich  
DIN 439 - 2

- Kontra Somun
- Hexagon Thin Nuts
- Niedrige Sechskantmuttern



d	M 8x1	M 10x1 M 10x1,25	M 12x1,5 M 12x1,25	M 14x1,5	M 16x1,5	M 18x1,5	M 20x1,5 M 20x2
e (min)	14,38	17,77	20,03	23,36	26,75	29,56	32,95
m (max)	4	5	6	7	8	9	10
s	13	16	18	21	24	27	30

d	M 22x1,5	M 24x2	M 27x2	M 30x2	M 33x2	M 36x3	M 39x3
e (min)	37,29	39,55	45,2	50,85	55,37	60,79	66,44
m (max)	11	12	13,5	15	16,5	18	19,5
s	34	36	41	46	50	55	60

d	M 42x3	M 45x3	M 48x3	M 52x4	M 56x4	M 60x4	M 64x4
e (min)	71,3	76,95	82,6	88,25	93,56	99,21	104,86
m (max)	21	22,5	24	26	28	30	32
s	65	70	75	80	85	90	95